

STEICO *secure* SGB

Putzbeschichtbare Dämmplatte für den Spritzwasserbereich



- Profiling to match the groove connection of the 60 mm STEICO*protect dry* / STEICO*duo dry* / STEICO*special dry*
- Starter plate when using 40 mm thick window reveal panels in the lower connection area
- System-compliant cutting with enclosed SGB tool

Application area



- Insulation board for splash water areas at the base and in the façade
- Starter plate when using 40 mm thick window reveal panels in the lower connection area

Technical data

Produced and supervised according to	EN 13163 EPS 032 WAP
Board designation	EPS-DIN EN 13163 -T1 -L2 -W2 -S2 -P3 -BS200 - CS(10)150 - DS(N)2 -DLT(2)5
Fire class (RTF) according to EN 13501-1	E
Declared thermal conductivity [W/(m*K)]	0.031
Water vapour diffusion resistance factor μ	30/70
European Waste Code (EWC)	AVV 170604 EAN AVV 170904
Bending strength [N/mm ²]	≥ 200 KPa according to EN 12089

Additional technical data

Thickness [mm]	Declared thermal resistance [(m ² *K)/W]	s_d value [m]
40	1.25	0.75

Forms of delivery

Thickness [mm]	Edge profile	Length [mm]	Width [mm]	Number/pack. [pcs.]
40	Long side rebate - blunt on three sides	1200	325	12

Weight and packing

Thickness [mm]	Edge profile	Length [mm]	Width [mm]	Weight/m ² [kg]	Weight/pcs. [kg]	Packaging/pack. Paper/cardboard (approx.) [kg]
40	Long side rebate - blunt on three sides	1200	325	1.20	0.5	1.40

Notes

Storage

- Store insulation boards horizontally, flat and dry
- Protect edges from damage
- Protect from direct sunlight
- Do not cover with transparent construction film

Disposal

- Disposal code AVV 170604 EAN AVV 170904

Cutting

- Cutting with insulation saw, cutter or glow wire cutter
- Cutting in reveal with SGB tool

Occupational health and safety

- Cutting with glow wire cutters only outdoors or in well ventilated rooms Note smoke development
- Observe safety data sheet

Installation

- This document is based on the German technical data sheet and is intended for general information purposes in an international context. National regulations and building codes must be additionally observed.

Substrate

- Full-surface backings made of cement-bonded boards; wood-based panels or solid wood components and mineral substrates
- Level, free of offsets, free of oil and grease
- Clean, dry (wood moisture content $\leq 20\%$)
- In the transition area to perimeter insulation installed on site, the installation of the base insulation board is only permitted with existing building waterproofing in accordance with DIN 18533-1

General board installation

- Installation butt-jointed and press-fitted in longitudinal bond to the substructure with honeycomb embossing facing out
- A minimum offset of 10 cm between the insulation board and the joints of the backing must be observed.
- The upper edges of the insulation board and backing must be at the same height to allow the wood fibre to be placed directly on top

Bonding to cement-bonded board materials, bituminous materials and mineral substrates

- Full-surface bonding with STEICO *secure Base Guard*
- Apply the adhesive mortar with a notched trowel in the longitudinal direction of the board
- Apply a thin layer to the substrate to improve adhesion
- Float the insulation boards and plaster them after the adhesive mortar has hardened
- To secure the layers, the boards can be fastened at certain points during installation

Bonding to wooden substrate

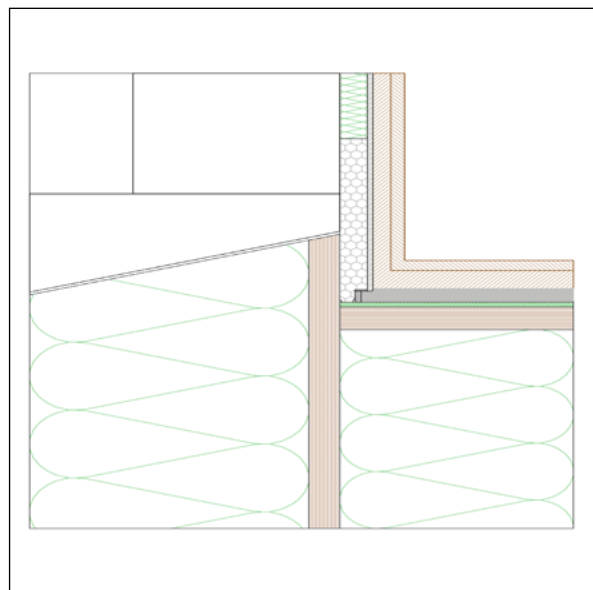
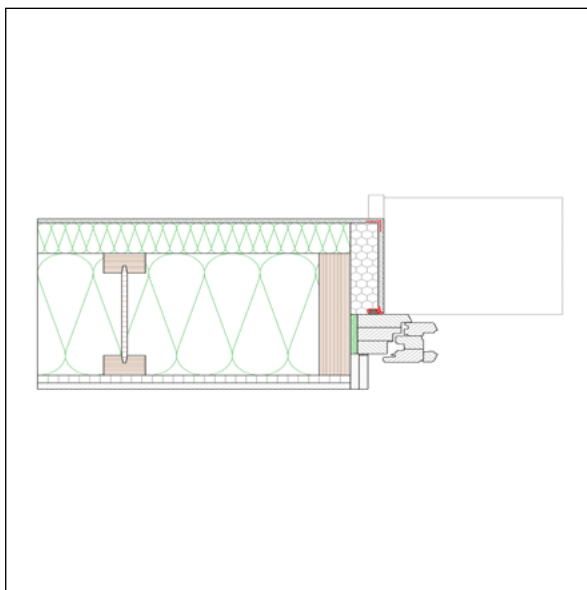
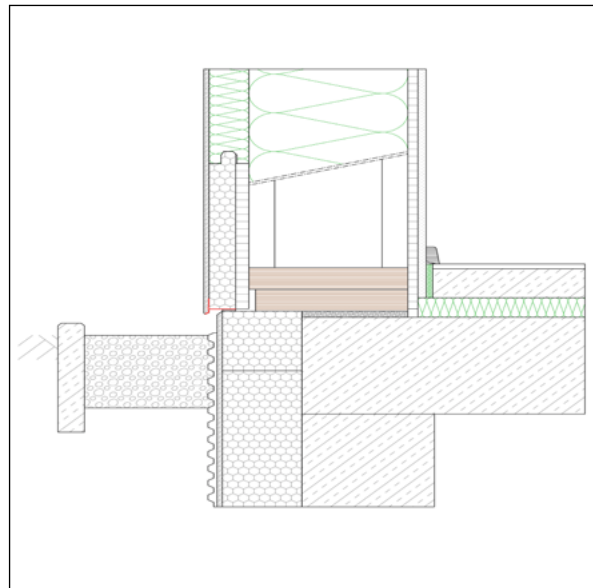
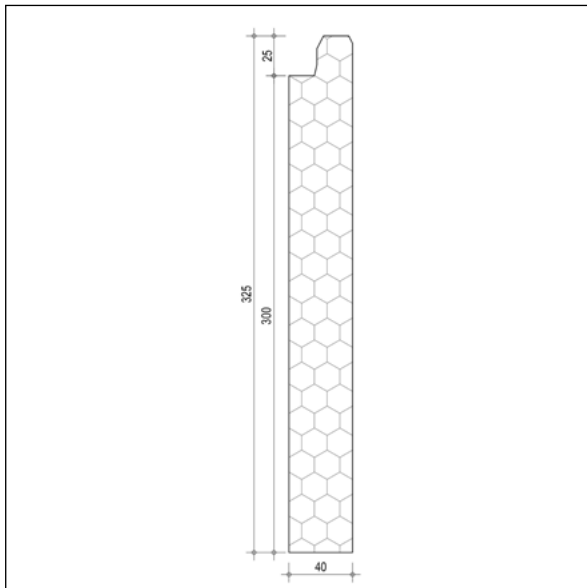
- 1-2 fasteners per stud / board (Ejotherm HFS screw fastener)
- Strip-shaped bonding with STEICO *multi fill* is possible on wood-based panels and solid wood substrates. STEICO *multi fill* in the longitudinal direction to the board at the bottom edge and center of the board (diameter of the adhesive bead is approx. 6-8 mm).
- No damage to underlying sealing layers due to fixing materials

Additional information

- Board joints of 2-5mm can be sealed with STEICO *multi fill*
- Exposure time 4 weeks
- Protect the board from intensive weather conditions (UV radiation)

STEICO *secure* SGB

Putzbeschichtbare Dämmplatte für den Spritzwasserbereich



Certificates and quality management



STEICO *secure SGB*

Putzbeschichtbare Dämmplatte für den Spritzwasserbereich

☰ Caption

other abbreviations

pal. Pallet

T&G Tongue and Groove

pac. Packaging

approx. Approximately

pcs. pieces