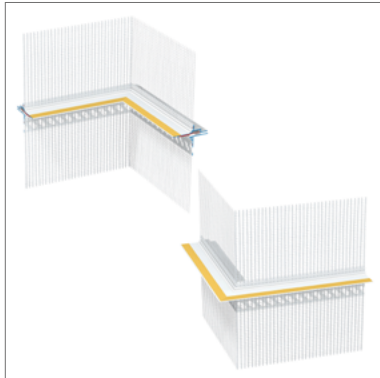


STEICO *secure* APU Eckverbinder Gleitlager



- Plastic profile for horizontal installation, for decoupling movements of different construction types in ETICS
- Clean plaster connection
- Aligned edge
- Integrated PUR sealing tape for driving rain-proof design

Application area



- Profile for absorbing compression and shear movements; e.g. Separation of timber and solid construction in ETICS

Technical data

Colour	white
Fabric material	Glass fibre mesh

Forms of delivery

Colour shade	Type	Number/pack. [pcs.]
white	Z58-I-2020 Inside corner	5
white	Z58-A-2020 Outside corner	5

Notes

Storage

- Dry, protect from UV radiation and moisture

Disposal

- dispose with normal construction waste, observe applicable legal guidelines

Machining

- With cross-cut saw, cut-off grinder or other suitable cutting tools for plastic processing

Occupational health and safety

- Observe the safety data sheet
- Wear safety goggles and work gloves when cutting to size

STEICO *secure* APU Eckverbinder Gleitlager

Installation

- This document is based on the German technical data sheet and is intended for general information purposes in an international context. National regulations and building codes must be additionally observed.

Substrate

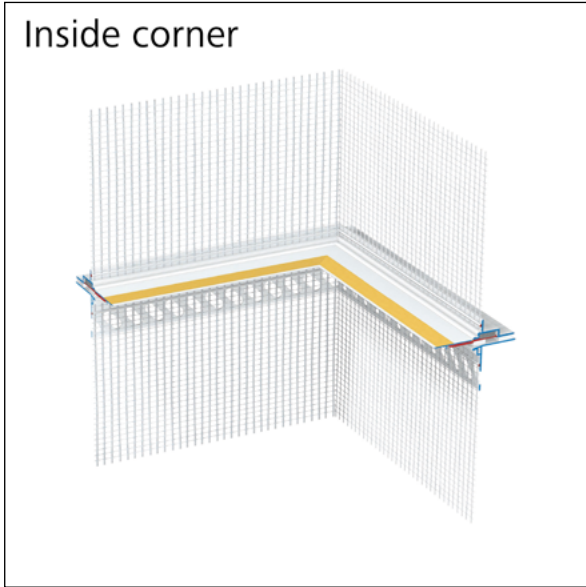
- Stable, even, dry substrate - free of substances that could impair adhesion (e.g. grease, dirt)
- The preparation of the substrate and the execution of the plastering work must correspond to applicable national standards

Setting the profile

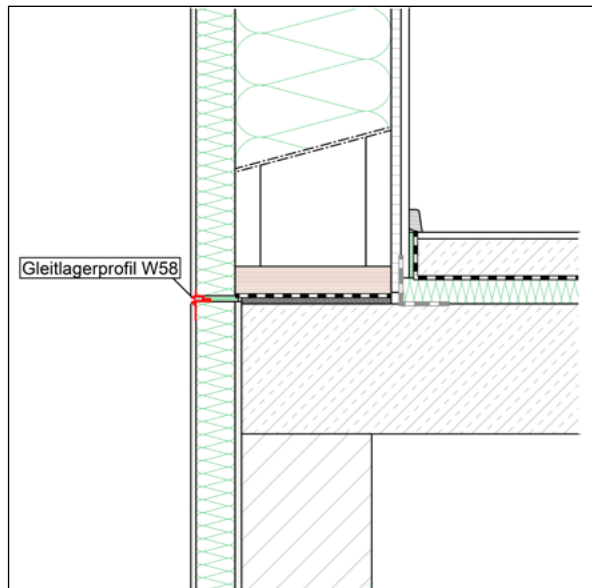
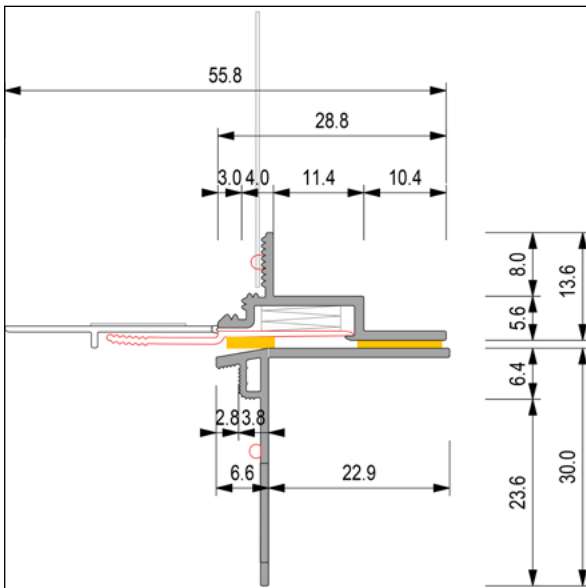
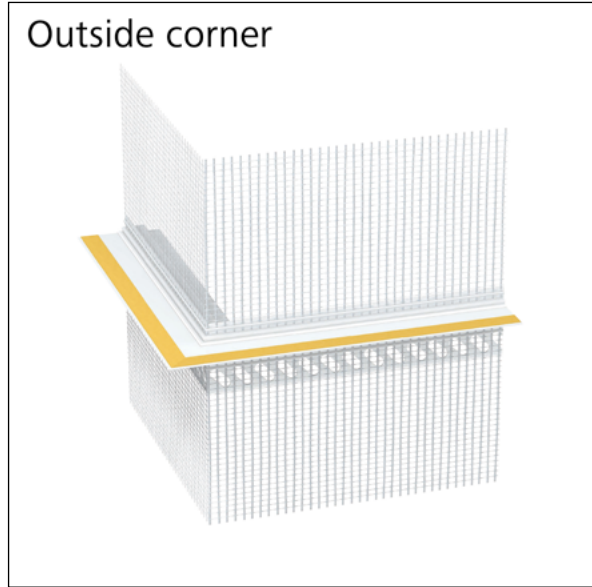
- Arrange the joint continuously at the level of the interfaces of different types of construction or insulation materials
- Creating a joint by rebating the plaster base board or installing different insulation materials separately for precise fitting of the profile
- Before installing the profile, backfill the joint with flexible insulation material (e.g. STEICO *flex*)
- Apply the reinforcement compound (e.g. STEICO *base*) over the entire surface in the width of the fabric strips
- Insert the profile into the fresh reinforcement compound (e.g. STEICO *base*) / toothing flush and fill in
- Remove excess reinforcement compound (e.g. STEICO *base*) with a stainless steel trowel
- The surface mesh must be installed overlapping up to the two inner edges of the profile
- After drying, apply the other layers of plaster
- Remove textured plaster over the edge, smooth plaster to the edge
- After the plaster has dried / break off the white protective flap and then pull out the red flap to activate the joint sealing tape installed in the profile
- This profile is only approved for horizontal installation
- Can withstand compression up to 4 mm and shear up to 2 mm
- Individual profiles / corner pieces can be connected to each other with connectors and connecting clips

STEICO *secure* APU Eckverbinder Gleitlager

Inside corner



Outside corner



Certificates and quality management



STEICO^{secure} APU Eckverbinder Gleitlager

☰ Caption

other abbreviations

pal. Pallet

T&G Tongue and Groove

pac. Packaging

approx. Approximately

pcs. pieces