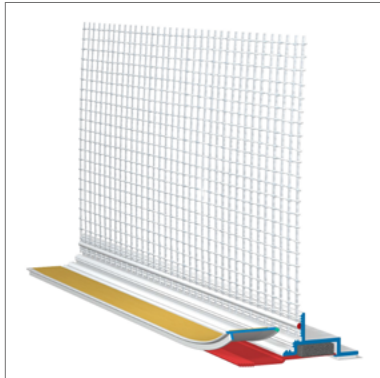


# STEICO*secure* APU Gewebeleiste W38



- Connection profile for windows and doors with PU joint sealing tape to accommodate three-dimensional movements for STEICO*secure* ETICS.
- Self-adhesive with integrated glass fibre mesh
- Self-adhesive protective flap for attaching cover foils with break-off edge
- Integrated joint sealing tape for wind and driving rain resistance

## Application area



- In ETICS for connection to windows/doors with shadow gap

## Technical data

Colour	White
Material	Plastic
Fabric material	Glass fibre mesh

## Forms of delivery

Colour shade	Length [mm]	Number/pack. [pcs.]	Metres/pack. [m]
white	2400	25	60

## Notes

### Storage

- Dry, protect from UV radiation and moisture

### Disposal

- dispose with normal construction waste, observe applicable legal guidelines

### Machining

- With cross-cut saw, cut-off grinder or other suitable cutting tools for plastic processing

### Occupational health and safety

- Observe the safety data sheet
- Wear safety goggles and work gloves when cutting to size

# STEICO *secure* APU Gewebeleiste W38

## Installation

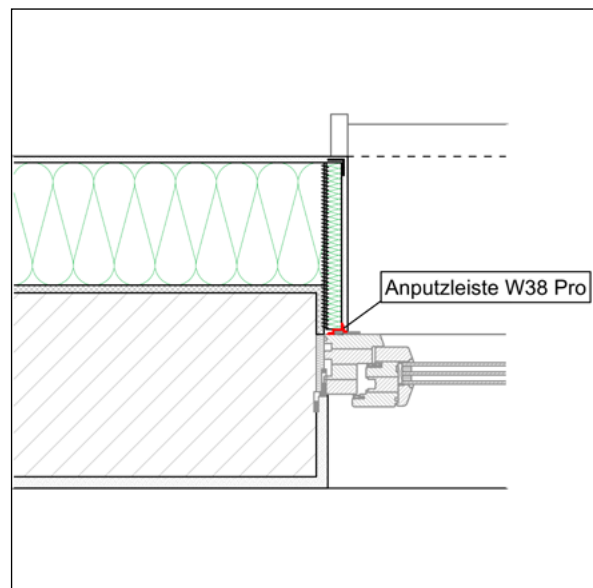
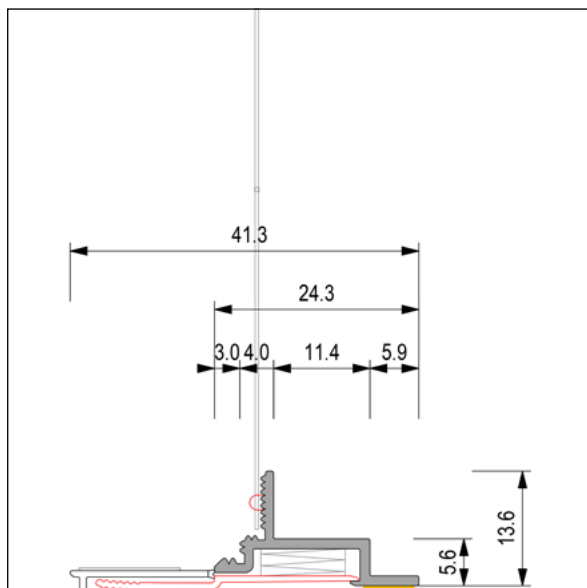
- This document is based on the German technical data sheet and is intended for general information purposes in an international context. National regulations and building codes must be additionally observed.

### Substrate

- Stable, even, dry substrate - free from substances that impair the adhesive bond (e.g. grease, dirt)
- Can be used regardless of the substrate: an adhesive test is not required
- The entire width of the profile must be applied to the substrate
- Insulation thicknesses up to 400mm / size of elements up to 15m<sup>2</sup>

### Setting the profile

- Installation position of the element is flush with the timber construction or masonry
- The profile is fitted immediately before installing the insulation / window reveal panel
- Attach the profile vertically with the protective flap facing inwards and press firmly onto the substrate
- Butt the insulation boards flush against the profile and notch them so that no cavity is created
- Overlap the integrated mesh strip and the glass fibre mesh of the surface reinforcement (or the mesh corner angle) by at least 10 cm and embed in the reinforcement compound (e.g. STEICO *base*) belonging to the system
- For vertical joints, always insert the profile in its original length at the bottom and the cut above
- In the corner area, first place the vertical profiles (at maximum length), then attach the horizontal profile between the vertical profiles
- The reinforcement or final coating must not protrude beyond the break-off edge of the protective flap, otherwise a clean separation is not possible
- Do not remove the protective flap until the top coat is dry
- First bend the protective flap and then pull it off towards the front.
- After removing the protective flap, pull the red flap out to the side to activate the integrated joint sealing tape
- To ensure that the profile functions properly, windows and doors must be fixed in accordance with the current applicable national standards so that impermissible movements can be ruled out



# STEICO *secure* APU Gewebeleiste W38

## Certificates and quality management



## ☰ Caption

### other abbreviations

**pal.** Pallet

**T&G** Tongue and Groove

**pac.** Packaging

**approx.** Approximately

**pcs.** pieces