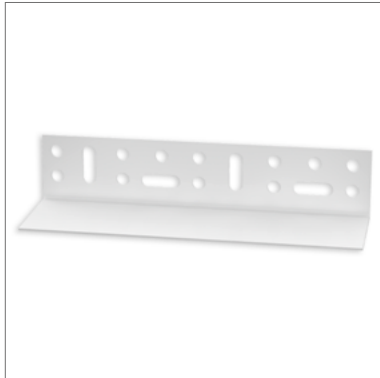


# STEICO *secure* Angle rail



- Plastic profile for attaching the lowest insulation boards in the STEICO*secure* ETICS
- Thermal bridge-free as not continuous and no metal
- Installation possible without plinth insulation installed
- Alignment of the lower system termination
- In combination with the STEICO*secure* base profile for insulation thicknesses of 50-100 mm

## Application area



- Angle rail for attaching the lowest insulation board in the ETICS in combination with the STEICO*secure* plinth profile

## Technical data

Colour	White
Material	Plastic

## Forms of delivery

### Delivery in handy boxes

Colour shade	Length [mm]	Projection [mm]	Number/pack. [pcs.]	Metres/pack. [m]
White	2000	50	15	30

## Notes

### Storage

- Dry, protect from UV radiation and moisture

### Disposal

- dispose with normal construction waste, observe applicable legal guidelines

### Cutting

- With a chop saw, Cordless cut-off sander or other tools suitable for cutting plastic

### Occupational health and safety

- Observe the safety data sheet
- Wear safety goggles and work gloves when cutting to size

### Dimensioning the fasteners

- A Ø of 8 mm is required for the necessary impact dowel
- Proper anchoring must be checked; if necessary, a new dowel must be placed at an appropriate distance

# STEICO *secure* Angle rail

## Installation

- This document is based on the German technical data sheet and is intended for general information purposes in an international context. National regulations and building codes must be additionally observed.

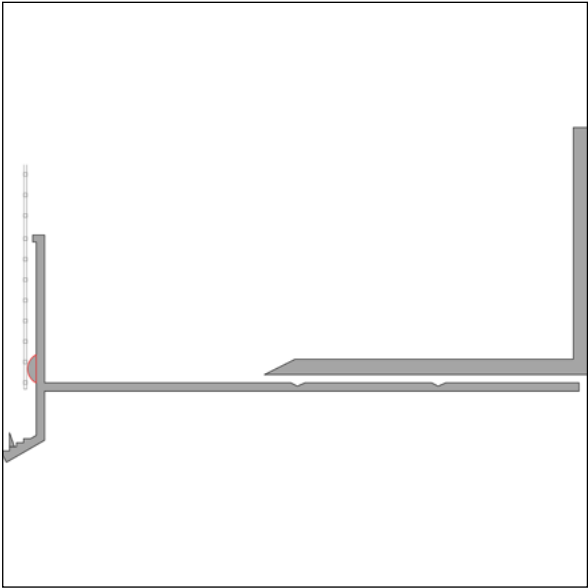
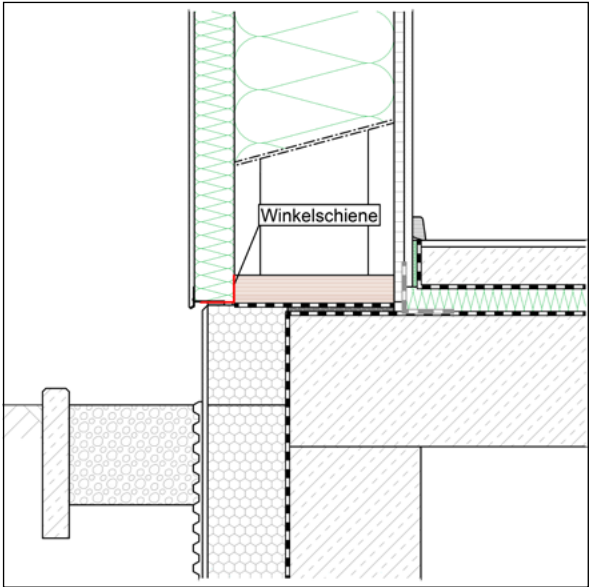
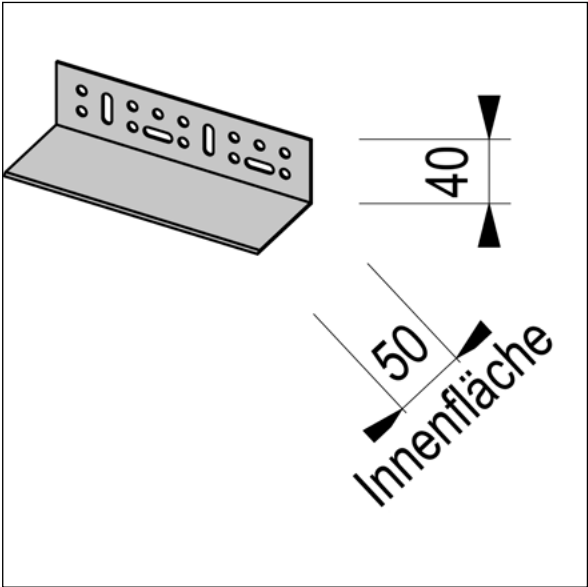
### Substrate

- Fastening depends on the anchors used and their technical properties
- All substrates must be clean, dry, load-bearing and free of separating substances
- Unsafe substrates must be checked for load-bearing capacity and suitability for subsequent coatings
- The preparation of the substrate must correspond to the current state of the art
- Severe unevenness must be leveled with a levelling filler if necessary

### Installation of the angle rail

- Joints of 3 mm must be created between individual angled rails and connected at the same height using butt connectors
- Panel joints must be offset; an offset should be maintained when using the plinth profile
- To ensure that the insulation boards can be laid horizontally and evenly, no dirt or adhesive mortar should get onto the support surface
- Compensate for slight unevenness behind the angle rail using shims (plastic)
- Can be combined with the STEICO*secure* base profile and the STEICO*secure* butt connector (1150 mm bar cut to size)

# STEICO *secure* Angle rail



Certificates and quality management



# STEICO *secure* Angle rail

## ☰ Caption

### other abbreviations

**pal.** Pallet

**T&G** Tongue and Groove

**pac.** Packaging

**approx.** Approximately

**pcs.** pieces