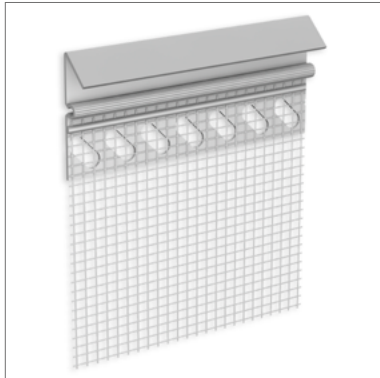


STEICO*secure* Attikaprofil



- Plastic profile with integrated glass fibre mesh for plaster finish under parapet covers and window sills for STEICO*secure* ETICS
- Clean plaster finish under components that are difficult to access

Application area



- The STEICO*secure* parapet profile forms a clean plaster finish in the parapet area, under sheet metal cladding or similar components

Technical data

Colour	white
Material	plastic
Fabric material	Glass fibre mesh

Forms of delivery

Delivery in handy boxes

Colour shade	Length [mm]	Number/pack. [pcs.]	Metres/pack. [m]
white	2500	10	25

Notes

Storage

- Dry, protect from UV radiation and moisture

Disposal

- dispose with normal construction waste, observe applicable legal guidelines

Machining

- With overlay shears or others tools suitable for cutting plastic

Occupational health and safety

- Observe the safety data sheet
- Wear safety goggles and work gloves when cutting to size

STEICO *secure* Attikaprofil

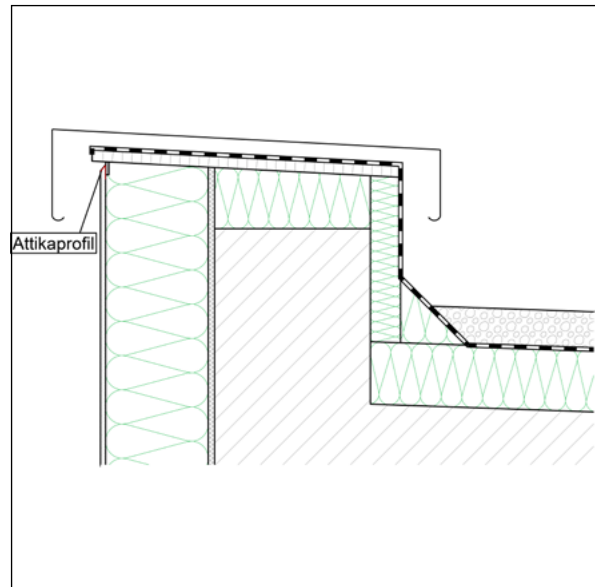
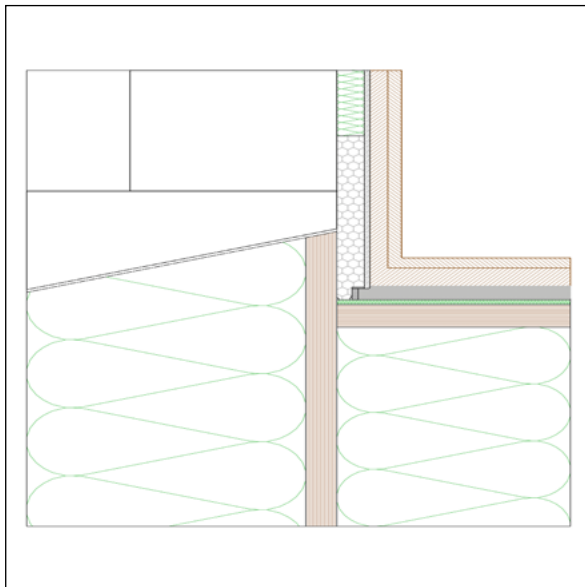
Installation

Substrate

- Stable, even, dry substrate - free of substances that could impair adhesion (e.g. grease, dirt)
- The insulation boards must be laid evenly, without offset

Setting the profile

- Cut the parapet profile to the finished size
 - Position the parapet profile flush with the edge and aligned in the reinforcement mortar provided and, if necessary, fix in the insulation material with plastic nails or push-fit connectors.
 - Insert the Mesh fabric into the reinforcing plaster and fill in
 - Fill in the reinforcement layer overlapping up to the edge of the plaster
 - Apply top coat of plaster and remove at the profile edge
- This document is based on the German technical data sheet and is intended for general information purposes in an international context. National regulations and building codes must be additionally observed.



Certificates and quality management



STEICO *secure* Attikaprofil

☰ Caption

other abbreviations

pal. Pallet

T&G Tongue and Groove

pac. Packaging

approx. Approximately

pcs. pieces