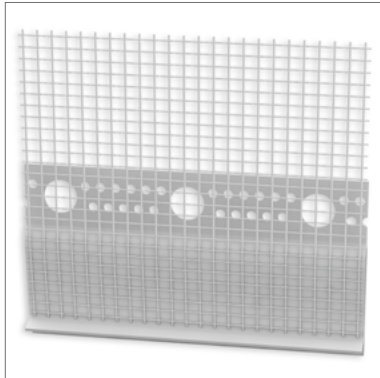


STEICO*secure* Blechanschlussprofil



- Plastic profile (6mm) with integrated glass fibre mesh for the STEICO*secure* ETICS, as a decoupled connection to existing sheet metal profiles.
- Movements are absorbed within the profile and can prevent cracking
- Connection of the render system without sealant / maintenance joints

Application area



- Plaster profile for flexible, decoupled design in ETICS with sheet metal and upstand connections

Technical data

| | |
|-----------------|------------------|
| Colour | white |
| Material | plastic |
| Fabric material | Glass fibre mesh |

Forms of delivery

Delivery in handy boxes

| Colour shade | Length [mm] | Number/pack. [pcs.] | Metres/pack. [m] |
|--------------|-------------|---------------------|------------------|
| white | 2500 | 10 | 25 |

Notes

Storage

- Dry, protect from UV radiation and moisture

Disposal

- dispose with normal construction waste, observe applicable legal guidelines

Cutting

- With overlay shears or other suitable cutting tools for plastic processing

Occupational health and safety

- Observe the safety data sheet
- Wear safety goggles and work gloves when cutting to size

STEICO*secure* Blechanschlussprofil

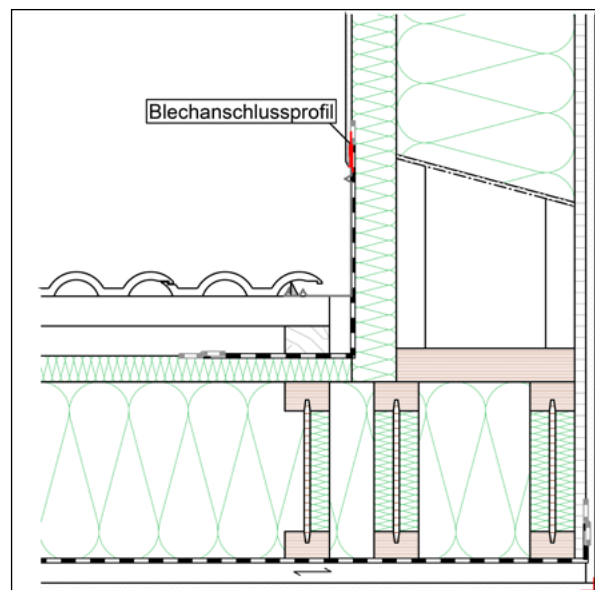
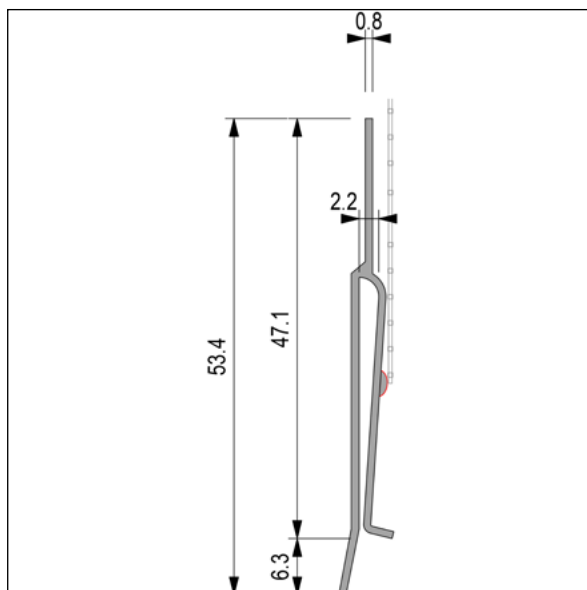
Installation

Substrate

- Stable, even, dry substrate - free of substances that could impair the adhesive bond (e.g. grease, dirt)
- The insulation boards and existing metal sheets must be laid evenly, to create a flat surface. All fasteners must be installed flush with the surface; sheets / connections must be fastened to the load-bearing substrate on site; possible in the insulation board with STEICO*secure* mounting spiral
- The upper 5.0 cm of the connection must be free of fasteners in order to slide the profile into place

Positioning the profile

- The sheet metal connection profile is placed on the fixed sheet metal before the surface reinforcement. Ensure that there is at least 1.0 cm of clearance between the profile insert and the sheet metal in order to ensure sufficient movement absorption.
 - The profile must be installed free of tension and pressure; **do not place it on protruding screws!**
 - Fix the profile at the correct height using reinforcing mortar or plastic nails/plug-in connectors; bond with STEICO*multi fil* to the insulation material.
 - The surface reinforcement must overlap the fabric mesh of the sheet metal connection profile by at least 10 cm.
- This document is based on the German technical data sheet and is intended for general information purposes in an international context. National regulations and building codes must be additionally observed.



Certificates and quality management



STEICO *secure* Blechanschlussprofil

☰ Caption

other abbreviations

pal. Pallet

T&G Tongue and Groove

pac. Packaging

approx. Approximately

pcs. pieces