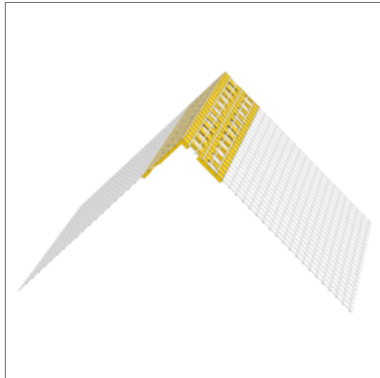


STEICO *secure* Mesh corner angle



- For edge protection and edge reinforcement with integrated plastic fibreglass mesh for the STEICO*secure* ETICS

Application area



- The STEICO*secure* mesh corner angles form flush and impact-resistant external corner edges in STEICO*secure* ETICS

Technical data

Colour	white
Material	plaster
Fabric material	Glass fibre mesh

Forms of delivery

Delivery in handy boxes

Colour shade	Length [mm]	Fabric length [mm]	Number/pack. [pcs.]	Metres/pack. [m]
white	2500	100*150	50	125

Notes

Storage

- Dry, protect from UV radiation and moisture

Disposal

- dispose with normal construction waste, observe applicable legal guidelines

Cutting

- With overlay shears or others tools suitable for cutting plastic

Occupational health and safety

- Observe the safety data sheet
- Wear safety goggles and work gloves when cutting to size

STEICO *secure* Mesh corner angle

Installation

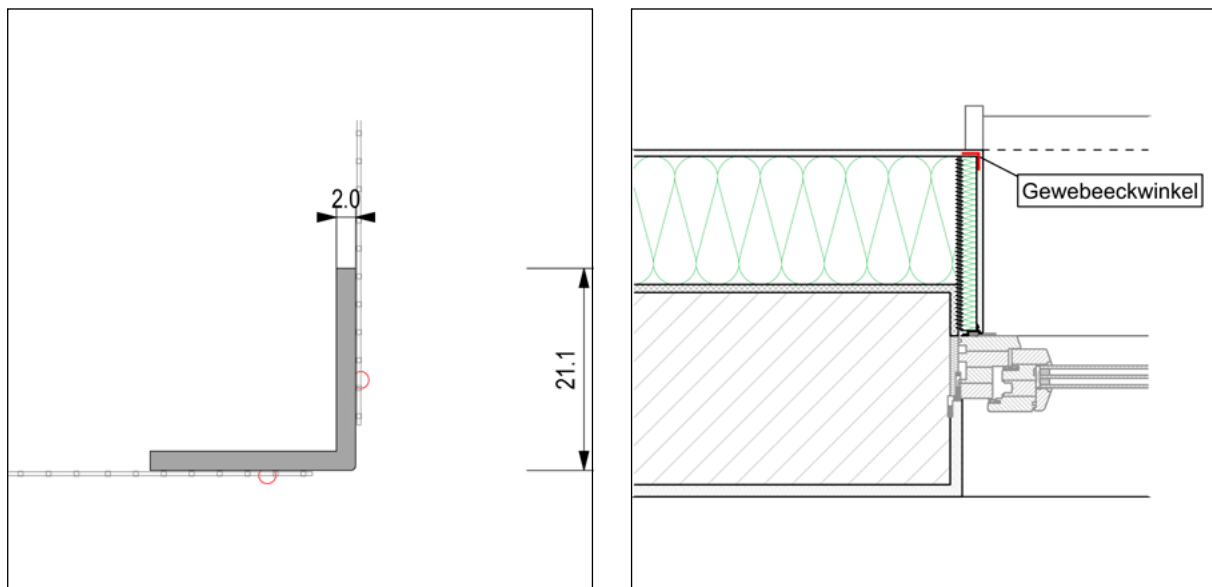
- This document is based on the German technical data sheet and is intended for general information purposes in an international context. National regulations and building codes must be additionally observed.

Substrate

- Corner edge surfaces must be prepared / repaired in advance to ensure evenness
- Check the substrate for cavities and strength
- Stable, even, dry substrate - free of substances that could impair the adhesive bond (e.g. grease, dirt)

Setting the corner bracket

- The mesh corner bracket is embedded with STEICO*secure* Base reinforcing mortar in the same way as the surface reinforcement
- Apply the reinforcement compound to the entire surface, in the width of the fabric at the corner / edge
- Insert the fabric corner angle into the wet layer / toothing in the correct alignment and free of bubbles and creases
- Remove excess reinforcement mortar to avoid doubling of the reinforcement layer
- If other mesh profiles, (plastering profiles, sealing profiles, etc) are used in the same area as the corner angle mesh, their mesh should overlap the corner angle mesh by at least 10cm
- When joining corner profiles, the plastic corner profile itself should be butted at the join but the mesh should be left longer to overlap by at least 10cm



Certificates and quality management



STEICO *secure* Mesh corner angle

☰ Caption

other abbreviations

pal. Pallet

T&G Tongue and Groove

pac. Packaging

approx. Approximately

pcs. pieces