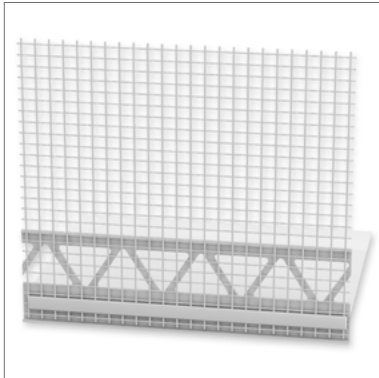


STEICO^{secure} Sockelprofil



- Plastic profile with integrated glass fibre mesh for the STEICO^{secure} ETICS
- Alignment-compliant, clean and thermal bridge-free plinth design
- With 6 mm drip edge
- In combination with angle rail, or with existing perimeter insulation

Application area



- Profile for clean finishes in the plinth area

Technical data

Colour	White
Material	Plastic
Fabric material	Glass fibre mesh

Forms of delivery

Delivery in handy boxes

Colour shade	Length [mm]	Projection [mm]	Breaking edge [mm]	Drip edge	Number/pack. [pcs.]	Metres/pack. [m]
White	2400	76	36/56	6	25	60

Notes

Storage

- Dry, protect from UV radiation and moisture

Disposal

- dispose with normal construction waste, observe applicable legal guidelines

Cutting

- With overlay shears or other tools suitable for cutting plastic

Occupational health and safety

- Observe the safety data sheet
- Wear safety goggles and work gloves when cutting to size

STEICO*secure* Sockelprofil

Installation

- This document is based on the German technical data sheet and is intended for general information purposes in an international context. National regulations and building codes must be additionally observed.

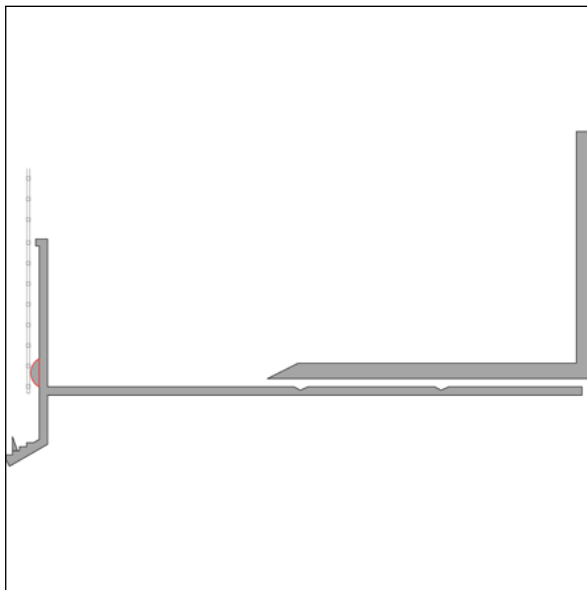
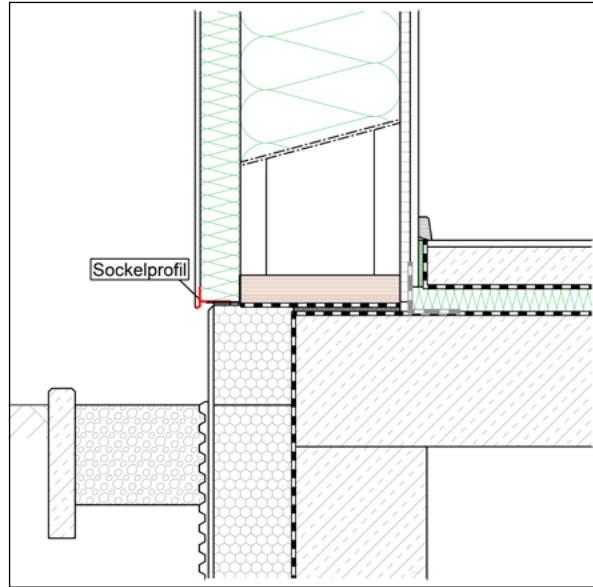
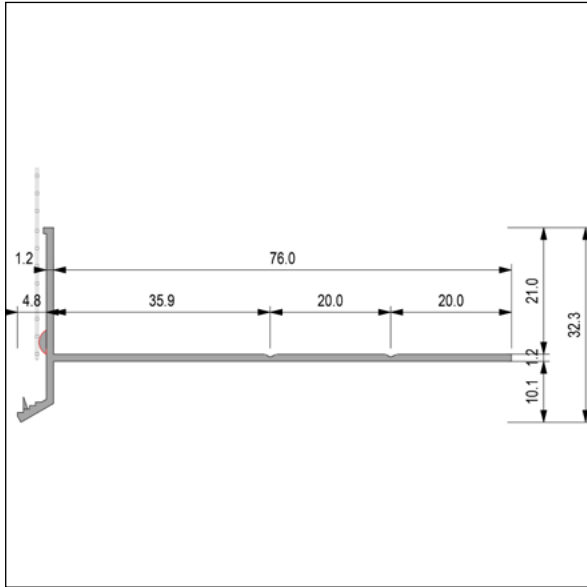
Substrate

- Stable, even, dry substrate - free of substances that could impair adhesion (e.g. grease, dirt)

Positioning the profile

- The plaster profile must be installed offset to the other components
- Overlap the surface mesh and the mesh integrated in the base profile, embed in the reinforcing compound
- If necessary, the projection of 76 mm can be reduced to 36 mm and 56 mm using the break edge
- After installing the wall insulation boards, the profile is pushed onto the angle rail or perimeter insulation
- Ensure a windproof and driving rain-proof connection between the profile and the perimeter insulation (installation of joint sealing tape)
- Fixing possible after panel installation
- Individual profiles can be joined together using plug connectors
- Can be combined with STEICO*secure* butt connector (30 mm piece) and STEICO*secure* angle rail

STEICO *secure* Sockelprofil



Certificates and quality management



STEICO^{secure} Sockelprofil

☰ Caption

other abbreviations

pal. Pallet

T&G Tongue and Groove

pac. Packaging

approx. Approximately

pcs. pieces