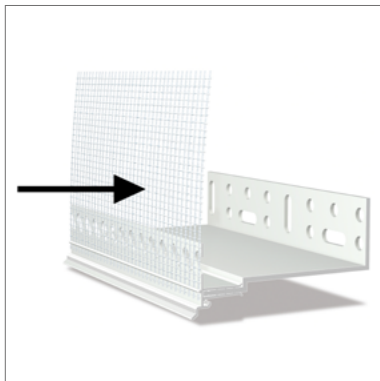


# STEICO*secure* Sockelprofil W 62-2



- Push-on base profile for base rail S61 for the STEICO*secure* ETICS
- System termination with integrated fabric mesh and drip edge

## Application area



- Push-on profile with drip edge for clean finishes in the plinth area

## Technical data

Colour	White
Material	plastic
Fabric material	Glass fibre mesh

## Forms of delivery

### Delivery in handy boxes

Colour shade	Length [mm]	Number/pack. [pcs.]	Metres/pack. [m]
White	2100	10	21

## Notes

### Storage

- Dry, protect from UV radiation and moisture

### Disposal

- dispose with normal construction waste, observe applicable legal guidelines

### Cutting

- With overlay shears or other tools suitable for cutting plastic

### Occupational health and safety

- Observe the safety data sheet
- Wear safety goggles and work gloves when cutting to size

# STEICO*secure* Sockelprofil W 62-2

## Installation

- This document is based on the German technical data sheet and is intended for general information purposes in an international context. National regulations and building codes must be additionally observed.

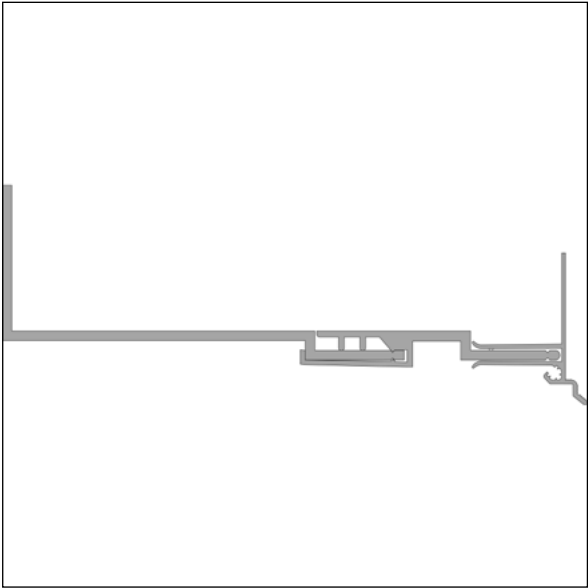
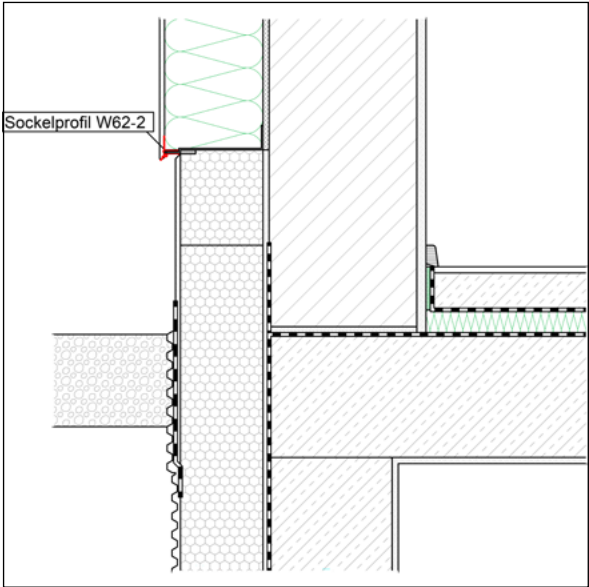
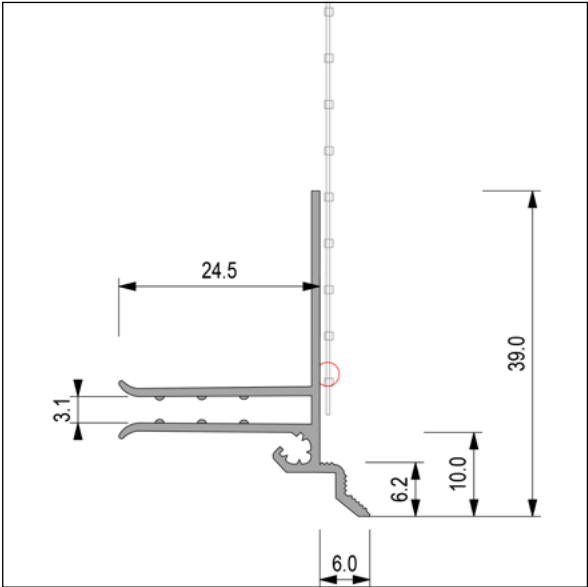
### Substrate

- Stable, even, dry substrate - free of substances that could impair adhesion (e.g. grease, dirt)

### Positioning the profile

- If possible, install in offset to base rail S61 / insulation boards
- Fix in place by pushing on after panel installation
- Overlap the surface mesh and the mesh integrated in the base profile and embed in the reinforcing compound
- Can be combined with STEICO*secure* butt connectors, STEICO*secure* base rail S61 and STEICO*secure* extension W 63

# STEICO*secure* Sockelprofil W 62-2



Certificates and quality management



# STEICO<sup>secure</sup> Sockelprofil W 62-2

## ☰ Caption

### other abbreviations

**pal.** Pallet

**T&G** Tongue and Groove

**pac.** Packaging

**approx.** Approximately

**pcs.** pieces