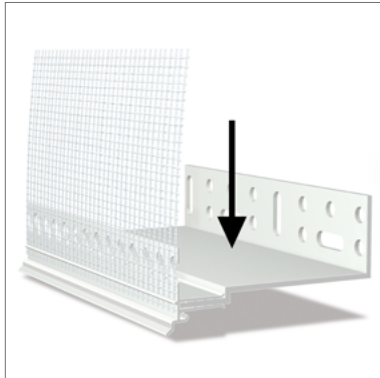


STEICO*secure* Sockelschiene S 61



- Plastic base rail for the STEICO*secure* ETICS
- Thermal bridge-free as not continuous and no metal
- In combination with base profile W62-2, installation is also possible without plinth insulation installed
- Alignment of the lower system termination for insulation thicknesses of 80-240mm

Application area



- Plastic plinth rail to accommodate the corresponding W62-2 plinth profile

Technical data

Colour	White
Material	Plastic

Forms of delivery

Delivery in handy boxes

Colour shade	Length [mm]	Projection [mm]	Number/pack. [pcs.]	Metres/pack. [m]
White	2000	80	10	20
White	2000	100	10	20
White	2000	120	10	20
White	2000	140	10	20
White	2000	160	10	20

Notes

Storage

- Dry, protect from UV radiation and moisture

Disposal

- dispose with normal construction waste, observe applicable legal guidelines

Cutting

- With overlay shears or other tools suitable for cutting plastic

Occupational health and safety

- Observe the safety data sheet
- Wear safety goggles and work gloves when cutting to size

Dimensioning the fasteners

- A \varnothing of 8 mm is required for the necessary impact dowel
- Proper anchoring must be checked; if necessary, a new dowel must be placed at an appropriate distance

STEICO*secure* Sockelschiene S 61

Installation

- This document is based on the German technical data sheet and is intended for general information purposes in an international context. National regulations and building codes must be additionally observed.

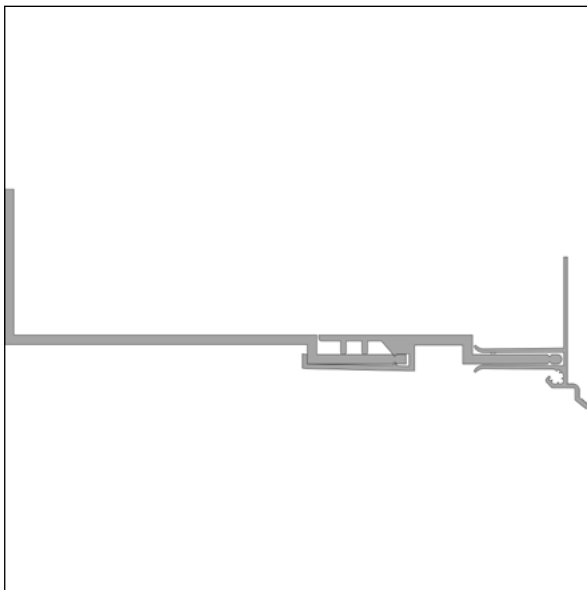
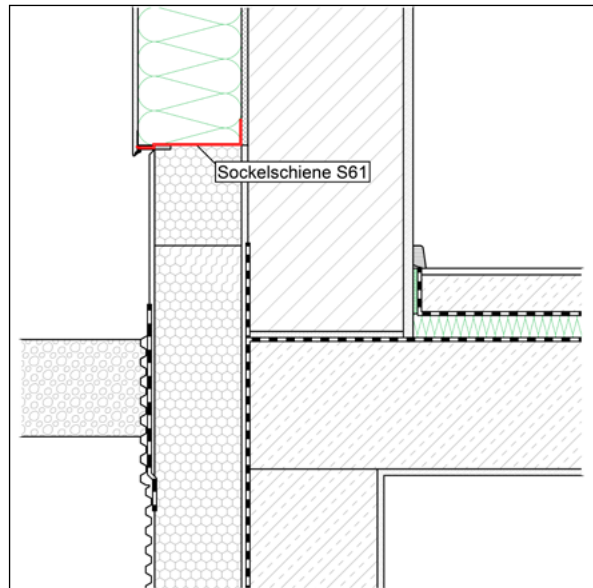
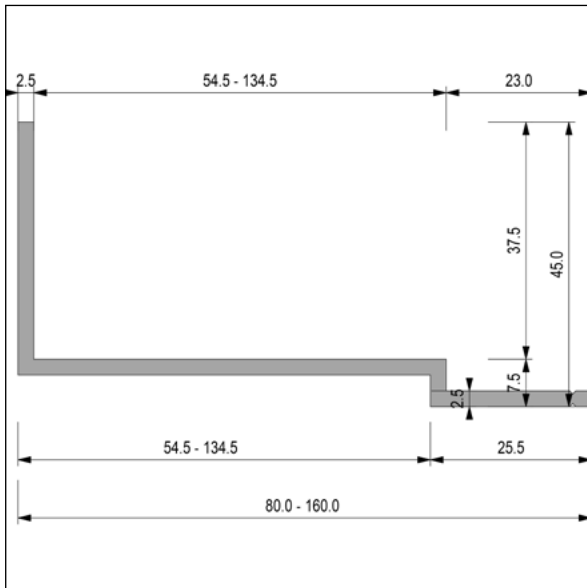
Substrate

- Rough mortar ridges must be removed.
- Larger unevenness can be evened out with suitable plaster
- Check the existing substrate for cavities and load-bearing capacity
- As soon as the quantity of washers affects the stability of the fastening, a leveling filler is required before installing the base rail

Installing the base rail

- Joints of 3 mm must be created between individual skirting rails and installed at the same height using butt connectors
- Panel joints must be offset; an offset should be maintained when using the extension and the push-on profile
- The insulation board must be placed flush with the front edge of the base rail
- To ensure that the insulation boards can be laid horizontally and evenly, no dirt/adhesive mortar should be allowed to get onto the contact surface.
- Compensate for slight unevenness behind the base rail with shims (plastic)
- Can be combined with the STEICO*secure* base profile W 62-2 and the STEICO*secure* extension W63

STEICO*secure* Sockelschiene S 61



Certificates and quality management



STEICO^{secure} Sockelschiene S 61

☰ Caption

other abbreviations

pal. Pallet

T&G Tongue and Groove

pac. Packaging

approx. Approximately

pcs. pieces