

# STEP BY STEP INSTRUCTIONS



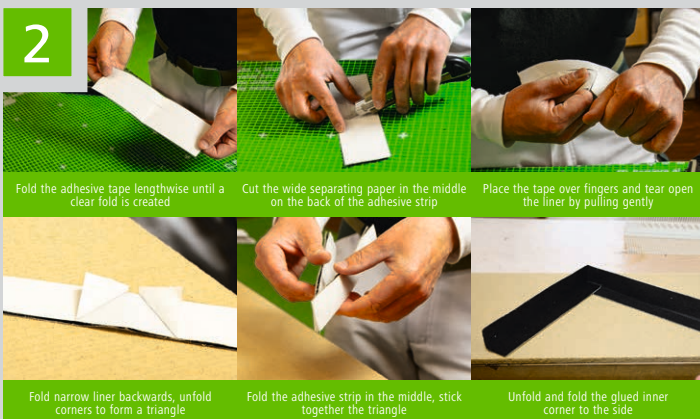
## STEICO *sill mineral*

Sealing system for window sills



1

Flush cutting of the STEICO*tri* insulation wedge to the appropriate length and depth of the window opening



2

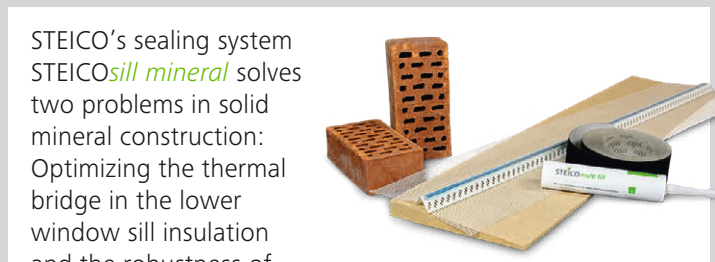
Fold the adhesive tape lengthwise until a clear fold is created  
 Cut the wide separating paper in the middle on the back of the adhesive strip  
 Place the tape over fingers and tear open the liner by pulling gently  
 Fold narrow liner backwards, unfold corners to form a triangle  
 Fold the adhesive strip in the middle, stick together the triangle  
 Unfold and fold the glued inner corner to the side

To form the corners, the adhesive strips are cut to length twice the width of the insulation wedge. Then follow the steps described above



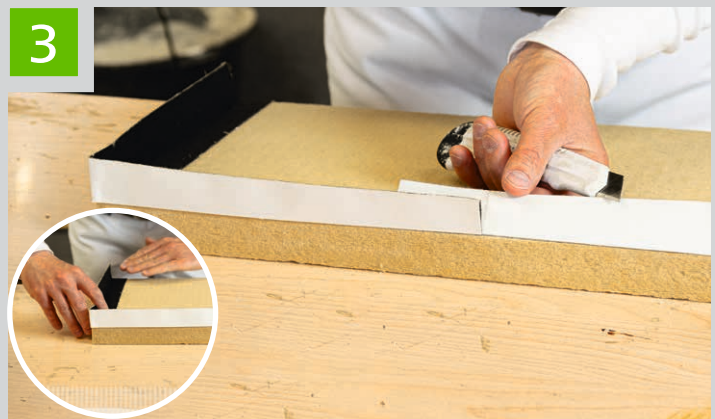
4

Bonding the wedge depending on insulation height with STEICO*multi fill* in adhesive beads or STEICO*secure Base* using adhesive pads,  $e \leq 200$  mm



STEICO's sealing system STEICO*sill mineral* solves two problems in solid mineral construction: Optimizing the thermal bridge in the lower window sill insulation and the robustness of the ETICS via a secondary water removal layer.

The combination of the hydrophobic wood fibre insulating wedge with technically complementary products results in a system that meets these requirements. In practice, this utilises common materials and their installation is detailed here in a step by step guide.



3

The STEICO*multi tape black* adhesive strips should overlap at least 50 mm so that a tight, three-sided trough is formed



5

Installation of the STEICO*tri* Insulating wedge: Float fully into the adhesive with pressure. **TIP:** Fold back separating paper for easy removal



# STEP BY STEP INSTRUCTIONS



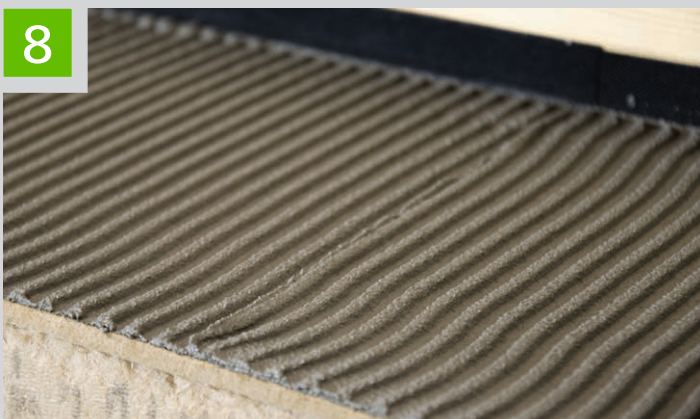
6

Ensure correct levelling, remove the remaining separating paper and press on the STEICO*multi tape black* all around



7

Then spread the entire wedge and the lower reveal area forward with STEICO*secure Base Guard* (or similar approved render)



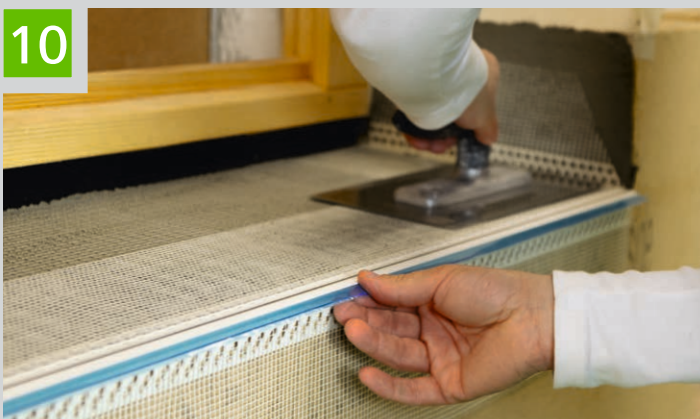
8

Toothing in the direction of the slope is performed with a toothed trowel 6 mm to achieve a dry film thickness of min. 4 - max. 10 mm



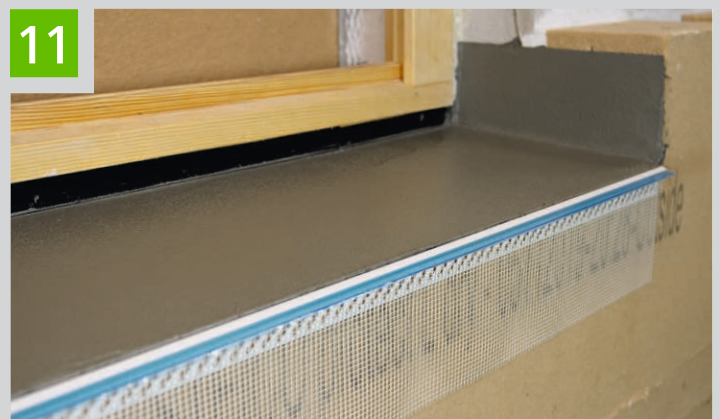
9

Cutting of STEICO*secure mesh 4x4*, fabric corner angle, end profile FB



10

Installation: Side fabric corner angle (optional), fabric insert flat, STEICO*secure end profile FB* at the leading edge



11

Now the fabric can be covered with STEICO*secure Base Guard*